

Mitutoyo

Mitutoyo Quality

MICROCORD

Crysta-Plus M Series

Manual Coordinate Measuring Machine

COORDINATE
MEASURING MACHINES



Crysta-Plus M: More quality, right down to the very last detail.





All-in-all the most economical solution

Construction Maintains High Accuracy for Long Periods

The Crysta-Plus M series features the world's highest measuring accuracy in manual coordinate measuring machines. The main unit base is manufactured from high-reliability Graplate (precision granite surface plate), which provides high-rigidity construction with extremely-small secular change by integrating the Y-axis guide rail with the measuring table.

X-, Y- and Z-axis guides are equipped with high-accuracy air bearings to provide excellent linearity and sliding smoothness so that the operator can move the stylus around the workpiece with minimum effort. The length measuring system of each axis employs a high-accuracy glass scales and linear encoders to enable long-term accuracy stability combined with negligible maintenance requirements apart from normal servicing.

Each Axis Clamp Switch and X/Y Fine Feed Knob

The X, Y and Z axes can be individually clamped with a one-touch air clamp. Each axis can be finely adjusted over the entire measuring range when in the clamped state.

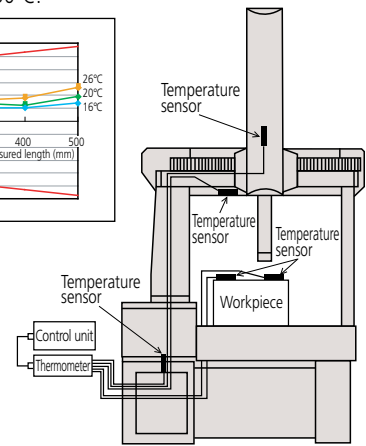
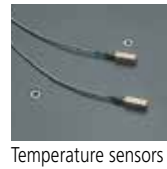
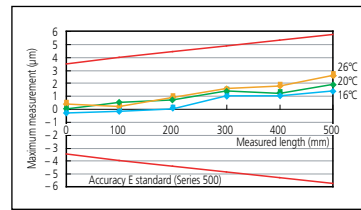
In the Crysta-Plus M443/M500 series, the X- and Y-axis fine-feed knobs are grouped together on the front of the main unit for convenience. When the centering microscope CF20 is installed, for example, these knobs allow easy and precise positioning without causing the operator strain or forcing an uncomfortable posture.

The Crysta-Plus M700 series is provided with a coarse-feed knob for each axis (18.85mm/revolution) as well as fine feed (0.99mm/revolution) to enable easy handling of this larger machine. Additionally, adoption of the Mobile Clamp Box allows the operator to perform clamping operations on each axis from just one location.



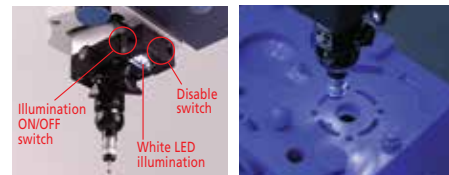
Temperature Compensation Function

The Crysta-Plus M series is standard equipped with the temperature compensation function. This function uses multiple sensors to assure maintenance of the specified accuracy over the wide operating temperature range of 15 to 30°C.



Handy Illuminator and Disable Switch

- In order to greatly improve workability during measurement of fine geometry or a deep hole, the white LED illuminator can be installed. (Option)
- In order to prevent unintentional triggering of the probe when changing the probe orientation or replacing a stylus, an ON/OFF switch (Disable switch) is provided on the probe holder. (Standard)



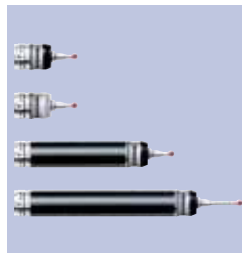
Probes



Touch-trigger Probe MH20



Touch-trigger Probe MH20i



Probe modules



Centering Microscope CF20

Repeatability	$2\sigma \leq 0.35\mu\text{m}$ (When using standard stylus)
Trigger force	XY: 0.08N Z: 0.75N

The centering microscope is best suited to measuring a small hole into which a stylus cannot be inserted, plastic or rubber items or a thin workpiece which would be deformed by contact with a touch-trigger probe stylus.

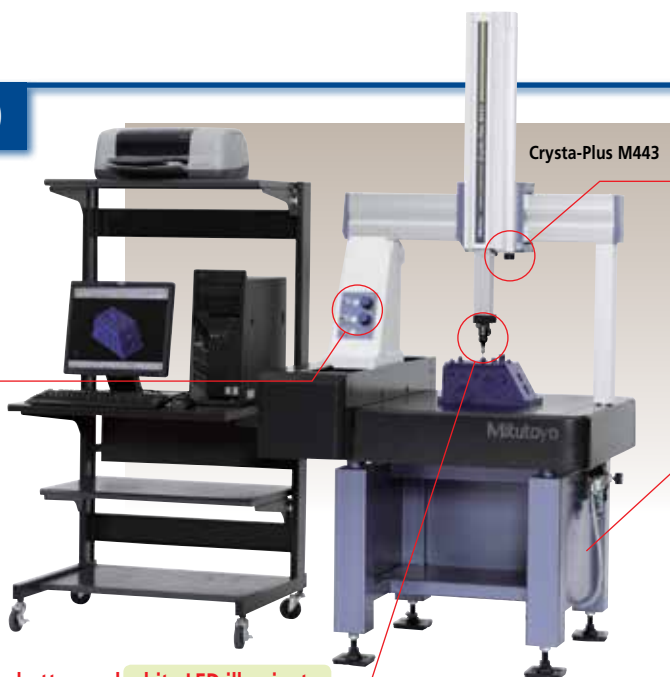
Note: The auxiliary weight set is required if the CF20 is installed.

High operability, cost effectiveness, environmental resistance and performance

Series M443/M500

- Required option
- Option

Clamp switch and fine feed knob on each axis
(Continuous fine feed operates over the entire range)



Crysta-Plus M443

Continuous fine feed over the entire Z-axis measuring range



Machine stand / Accessory storage

Interchangeable probe, probe disable button and white LED illuminator

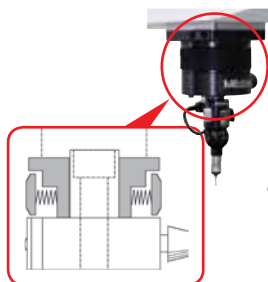
Series M700

Fine/Coarse feed knob on each axis
(Continuous fine/coarse feed operates over the entire measuring range)

Interchangeable probe, probe disable button and white LED illuminator

Constant grip

A constant-force handgrip is installed at the lower end of the ram to limit the force applied by the operator during operation, thus improving repeatability of measurement.



Constant-force handgrip



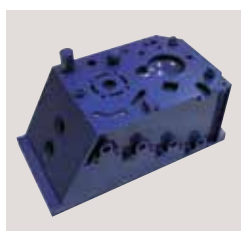
Crysta-Plus M7106

Mobile clamp switch BOX

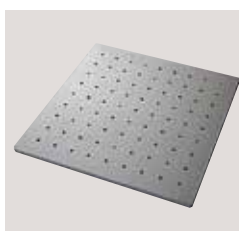
Application



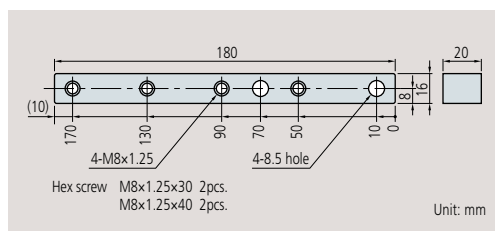
Clamping kit



Workpiece



Sub-plate

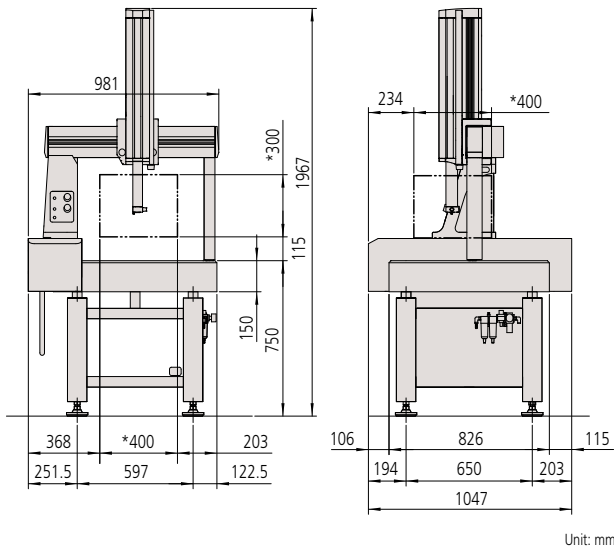


Extension arm set

Crysta-Plus M443

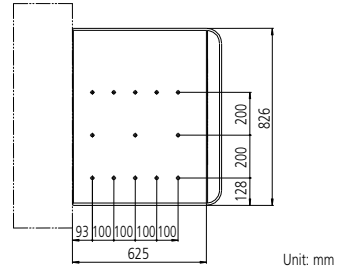


Dimensions (Main Unit)

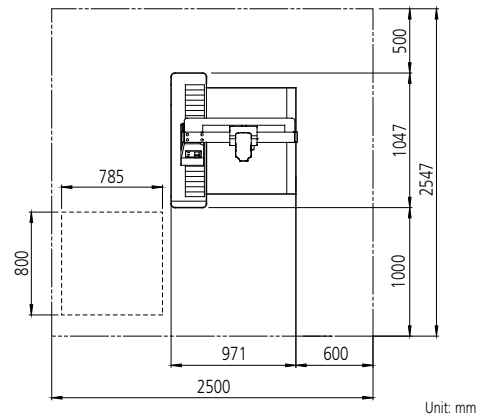


	Crysta-Plus M443
Mass of main unit	360kg
Mass of machine stand	50kg

Dimensions (Measuring Table)



Installation floor space



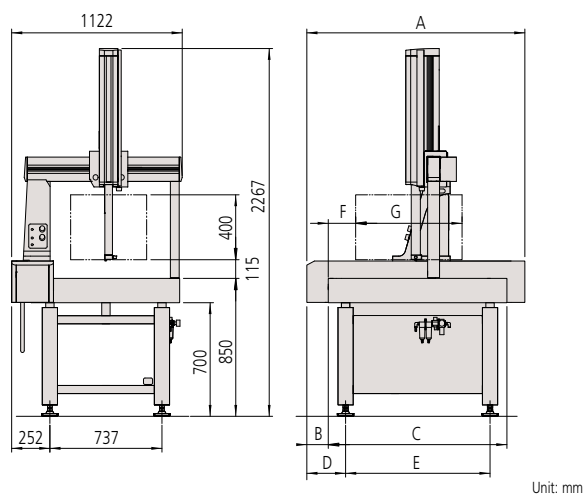
*Pictures and dimensions shown in this page are an example of system configuration.
Contact the dealer or the nearest Mitutoyo sales office for detail of the system configuration.

Crysta-Plus M544 / M574



Crysta-Plus M574

Dimensions (Main Unit) Crysta-Plus M544 / M574



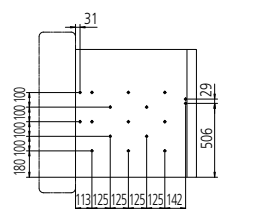
Unit: mm

	Crysta-Plus M544	Crysta-Plus M574
Mass of main unit	450kg	575kg
Mass of machine stand	62kg	71kg

	Crysta-Plus M544	Crysta-Plus M574
A	1099mm	1434mm
B	106mm	141mm
C	875mm	1175mm
D	220mm	255mm
E	650mm	950mm
F	180mm	180mm
G	400mm	700mm

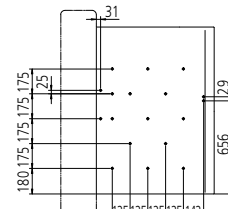
Dimensions (Measuring Table)

Crysta-Plus M544



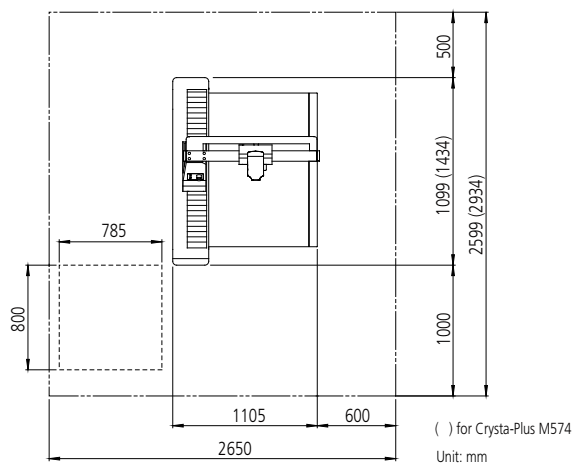
Unit: mm

Crysta-Plus M574



Unit: mm

Installation floor space Crysta-Plus M544 / M574



() for Crysta-Plus M574
Unit: mm

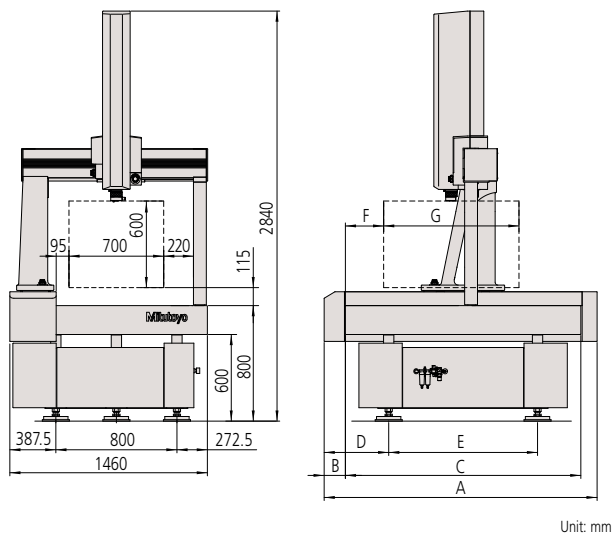
*Pictures and dimensions shown in this page are an example of system configuration.
Contact the dealer or the nearest Mitutoyo sales office for detail of the system configuration.

Crysta-Plus M776 / M7106



Crysta-Plus M7106

Dimensions (Main Unit) Crysta-Plus M776 / M7106



Unit: mm

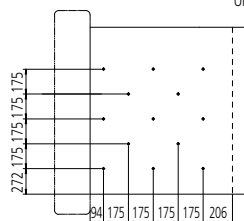
	Crysta-Plus M776	Crysta-Plus M7106
Mass of main unit (including machine stand)	1560kg	1800kg

	Crysta-Plus M776	Crysta-Plus M7106
A	1717mm	2017mm
B	157mm	157mm
C	1440mm	1740mm
D	320mm	370mm
E	800mm	1000mm
F	283mm	283mm
G	700mm	1000mm

Dimensions (Measuring Table)

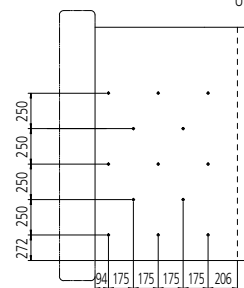
Crysta-Plus M776

Unit: mm

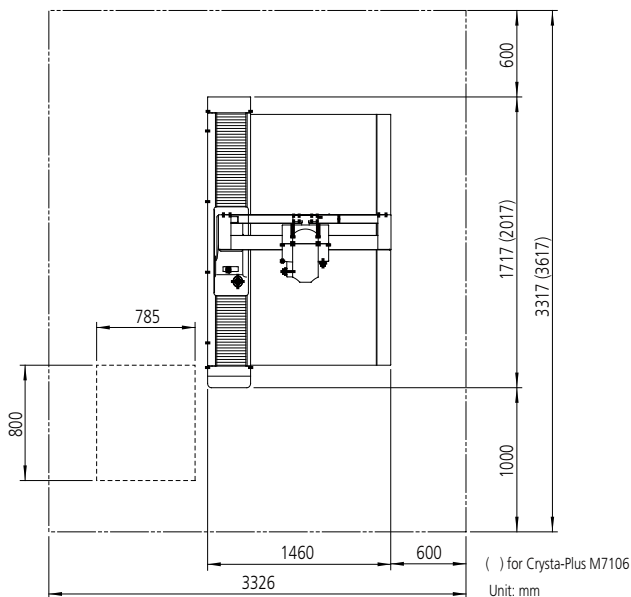


Crysta-Plus M7106

Unit: mm



Installation floor space Crysta-Plus M776 / M7106



Unit: mm

*Pictures and dimensions shown in this page are an example of system configuration. Contact the dealer or the nearest Mitutoyo sales office for detail of the system configuration.

Crysta-Plus M443 / M500 / M700 Series Specifications

Specifications

Item		Model	Crysta-Plus M443
Measuring range	X axis		400mm
	Y axis		400mm
	Z axis		300mm
Resolution			0.0005mm
Accuracy (20°C)	Measuring error (E)		$(3.0+4L/1000)\mu\text{m}^{*3}$
ISO 10360-2 ^{*1,*2}	Probing error (R)		4.0 μm
Temperature compensation function			Standard
Length standard			Linear encoder
Guide method			Air bearing on each axis
Clamping on each axis			One-touch air clamp
Fine feed of each axis			Continuous fine feed over the entire measuring range on each axis
Measuring table	Effective size		624mm×805mm
	Material		Granite
Workpiece	Maximum height		480mm
	Maximum mass		180kg
Z-axis balancing method			Counterweight (adjustable by 1.5kg)
Machine dimensions	Width		981mm
	Depth		1047mm
	Height		1967mm
Mass of main unit (including machine stand)			410kg
Air supply	Pressure		0.35MPa (air source: 0.5-0.9MPa)
	Consumption (Under normal conditions)		50L/min (air source: 100L/min)

Specifications

Item		Model	Crysta-Plus M544	Crysta-Plus M574
Measuring range	X axis		500mm	
	Y axis		400mm	700mm
	Z axis		400mm	
Resolution			0.0005mm	
Accuracy (20°C)	Measuring error (E)		$E=(3.5+4L/1000)\mu\text{m}^{*3}$	
ISO 10360-2 ^{*1,*2}	Probing error (R)		4.0 μm	
Temperature compensation function			Standard	
Length standard			Linear encoder	
Guide method			Air bearing on each axis	
Clamping on each axis			One-touch air clamp	
Fine feed of each axis			Continuous fine feed over the entire measuring range on each axis	
Measuring table	Effective size		764mm×875mm	764mm×1175mm
	Material		Granite	
Workpiece	Maximum height		595mm	
	Maximum mass		180kg	
Z-axis balancing method			Counterweight (adjustable by 1.5kg)	
Machine dimensions	Width		1122mm	
	Depth		1099mm	1434mm
	Height		2267mm	
Mass of main unit (including machine stand)			512kg	646kg
Air supply	Pressure		0.35MPa (air source: 0.5-0.9MPa)	
	Consumption (Under normal conditions)		50L/min (air source: 100L/min)	

Specifications

Item		Model	Crysta-Plus M776	Crysta-Plus M7106
Measuring range	X axis		700mm	
	Y axis		700mm	1000mm
	Z axis		600mm	
Resolution			0.0005mm	
Accuracy (20°C)	Measuring error (E)		$E=(4.5+4.5L/1000)\mu\text{m}^{*3}$	
ISO 10360-2 ^{*1,*2}	Probing error (R)		5.0 μm	
Temperature compensation function			Standard	
Length standard			Linear encoder	
Guide method			Air bearing on each axis	
Clamping on each axis			One-touch air clamp (mobile clamp switch BOX)	
Fine feed of each axis			Continuous fine/coarse feed over the entire measuring range on each axis	
Measuring table	Effective size		900mm×1440mm	900mm×1740mm
	Material		Granite	
Workpiece	Maximum height		800mm	
	Maximum mass		500kg	800kg
Z-axis balancing method			Counterweight (adjustable by 1.7kg)	
Machine dimensions	Width		1460mm	
	Depth		1717mm	2017mm
	Height		2840mm	
Mass of main unit (including machine stand)			1560kg	1800kg
Air supply	Pressure		0.4MPa (air source: 0.5-0.9MPa)	
	Consumption (Under normal conditions)		50L/min (air source: 100L/min)	

Guaranteed accuracy temperature limits

Range	15 to 30 °C
Rate of change	2°C per hour or less, 5°C in 24 hours or less
Gradient	1°C or less per meter (both horizontal and vertical direction)

*1: According to ISO 10360-2 methods

*2: When using the touch-trigger probe MH20i/MH20/TP20 and stylus (L110mm)

*3: L=Measured length (mm)

Note: When the appearance of the natural stone measuring table varies according to the source, the high stability for which this material is known can always be relied upon.

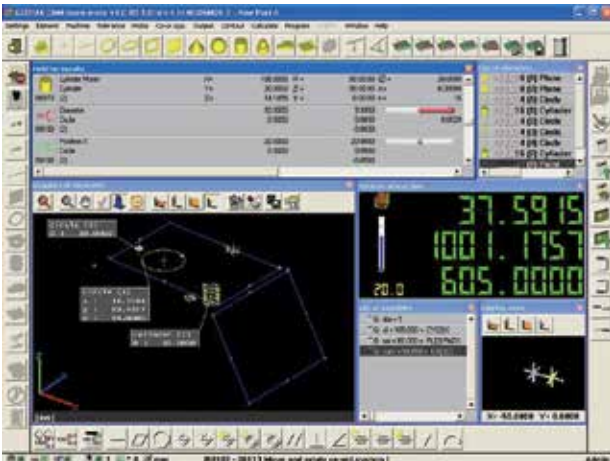
Applications that support your measurement tasks

MCOSMOS

GEOPAK (High Performance General-Purpose Measurement Program)

This module is the heart of the MCOSMOS software system and is used to measure and analyze geometric elements. All the functions are provided by icons or pull-down menus, freeing users from the need to memorize complex code numbers. It is unnecessary to switch windows for operations, so even novices can promptly select desired functions. Its main features include easier viewing of measuring procedures and results such as realtime graphic display of measurement results and a function for direct callup of elements from results graphics, which were not previously available.

Even if you upgrade to a CNC model in the future, the basic operations remain exactly the same, so you can become familiar with the CNC model's operations just by studying the additional.

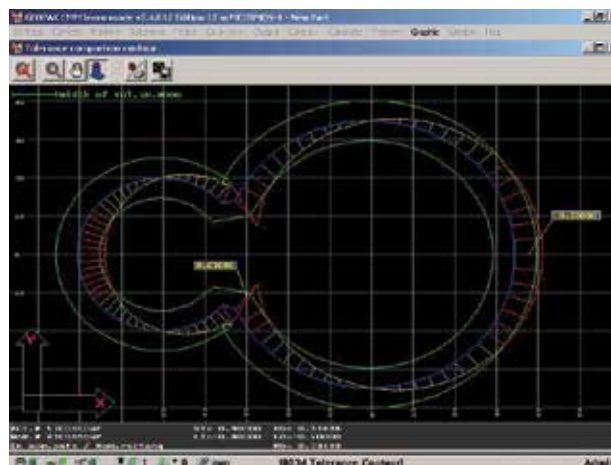


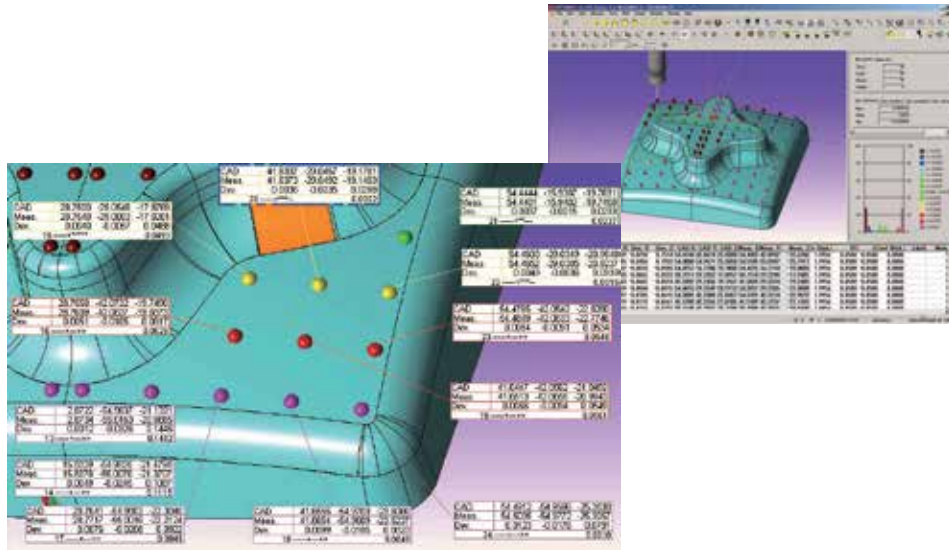
Cutting finished products



SCANPAK (Optional Contour Measurement Program)

Measures two-dimensional unfiltered profiles and performs various evaluations. It can evaluate profile measurement data, based on design data, and calculate various elements and inter-elements by specifying a range from the measurement data.





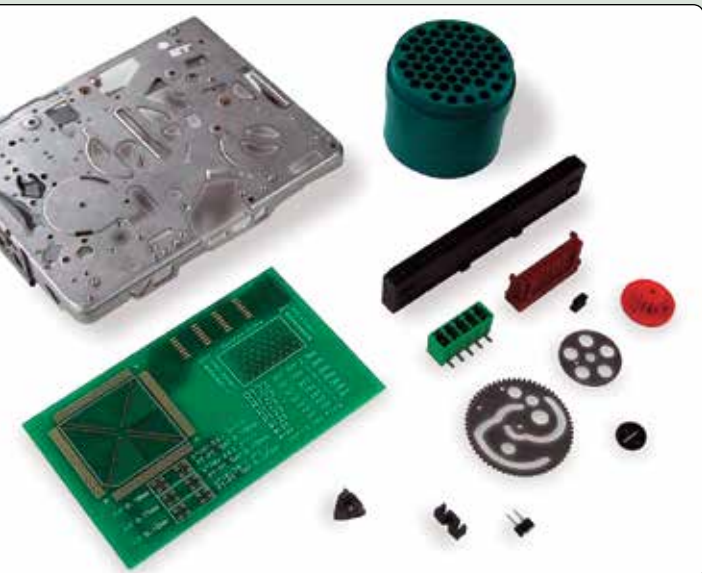
Resin molded or plastic formed products



CAT1000S
(Optional Free Curved Surface Evaluation Program)

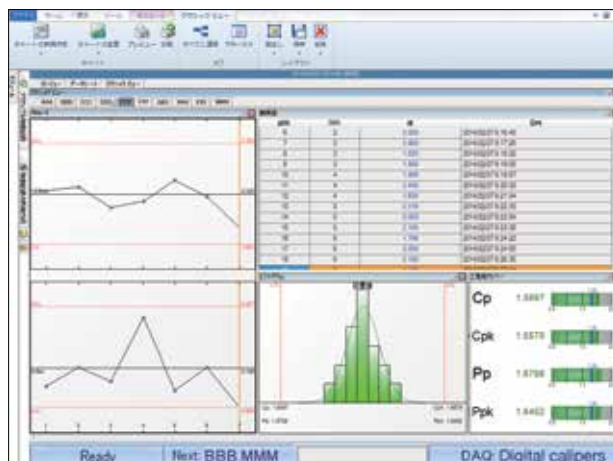
Checks and compares the workpiece with the CAD data and directly outputs the results in the form of CAD data in various formats. It supports SAT/STEP CAD data as standard, and software to directly convert from/to various types of CAD data is available as an option.

Small parts



MeasurLink
(Optional Statistical Processing, Process Control Program)

This program can process various statistical analyses based on the measurement results. A real time display of a control chart allows earlier detection of potential defects such as wear or damage to cutting tools. This allows implementation of effective countermeasures including changes in cutting depth and working conditions. Using this program as a terminal, it is also possible to connect to a higher network environment for integrated control.





Whatever your challenges are, Mitutoyo supports you from start to finish.

Mitutoyo is not only a manufacturer of top quality measuring products but one that also offers qualified support for the lifetime of the equipment, backed up by comprehensive services that ensure your staff can make the very best use of the investment.

Apart from the basics of calibration and repair, Mitutoyo offers product and metrology training, as well as IT support for the sophisticated software used in modern measuring technology. We can also design, build, test and deliver bespoke measuring solutions and even, if deemed cost-effective, take your critical measurement challenges in-house on a sub-contract basis.

Note: Product illustrations are without obligation. Product descriptions, in particular any and all technical specifications, are only binding when explicitly agreed upon.

MITUTOYO and MICAT are either registered trademarks or trademarks of Mitutoyo Corp. in Japan and/or other countries/regions. Other product, company and brand names mentioned herein are for identification purposes only and may be the trademarks of their respective holders.

Mitutoyo

Mitutoyo Asia Pacific Pte. Ltd.

Company Reg No. 197800892N
24 Kallang Avenue, Mitutoyo Building, Singapore 339415
Tel: (65) 6294 2211 Fax: (65) 6299 6666
E-mail: mapsg@mitutoyo.com.sg



www.mitutoyo.com.sg | www.mitutoyo.com.my
www.mitutoyo.co.th | www.mitutoyo.co.id
www.mitutoyo.com.vn | www.mitutoyo.com.ph

Mitutoyo (Malaysia) Sdn. Bhd.
 Mah Sing Integrated Industrial Park,
 4, Jalan Utarid US/14, Section U5,
 40150 Shah Alam, Selangor, Malaysia
 Tel: (60) 3-7845 9318
 Fax: (60) 3-7845 9346
 E-mail: mmsb@mitutoyo.com.my

Penang Branch
 Tel: (60) 4-641 1998 Fax: (60) 4-641 2998
Johor Branch
 Tel: (60) 7-352 1626 Fax: (60) 7-352 1628

Mitutoyo (Thailand) Co., Ltd.
 76/3-5, Chaengwattana Road, Kwaeng
 Anusaawaree, Khet Bangkaen,
 Bangkok 10220, Thailand
 Tel: (66) 2080 3500
 Fax: (66) 2521 6136
 E-mail: office@mitutoyo.co.th

Chonburi Branch
 Tel: (66) 2080 3563 Fax: (66) 3834 5788
Amata Nakorn Branch
 Tel: (66) 2080 3565 Fax: (66) 3846 8978

PT. Mitutoyo Indonesia
 Jalan Sriwijaya No.26
 Desa cibatu
 Kec. Cikarang Selatan
 Kab. Bekasi 17530, Indonesia
 Tel: (62) 21-2962 8600
 Fax: (62) 21-2962 8604
 E-mail: ptmi@mitutoyo.co.id

Mitutoyo Vietnam Co., Ltd.
 No. 07-TT4, My Dinh - Me Tri Urban Zone,
 My Dinh 1 Ward, Nam Tu Liem District,
 Hanoi, Vietnam
 Tel: (84) 24-3768 8963
 Fax: (84) 24-3768 8960
 E-mail: mvc@mitutoyo.com.vn
Ho Chi Minh City Branch
 Tel: (84) 28-3840 3489
 Fax: (84) 28-3840 3498
 E-mail: mvc@mitutoyo.com.vn

Mitutoyo Philippines, Inc.
 Unit 2103, GMV Building 2,
 107 North Main Avenue,
 Laguna Technopark, Biñan,
 Laguna 4024, Philippines
 Tel: (63) 49-544 0272
 Fax: (63) 49-544 0272
 E-mail: mpi@mitutoyo.com.ph